

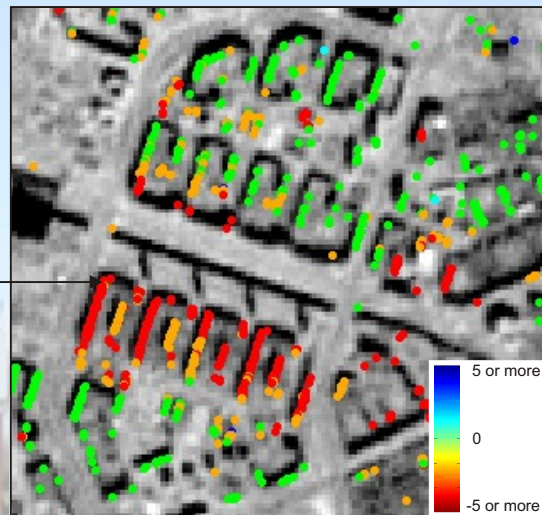
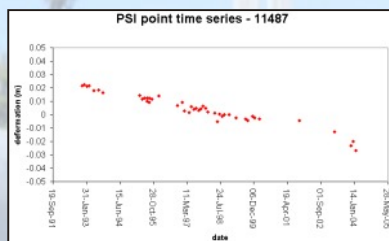


PIPEMON is part of the European Space Agency Earth Observation Market Development (EOMD) programme.

## **Pipeline Monitoring Service**

Mapping of potentially hazardous ground motion in close proximity to existing pipelines and infrastructure using radar satellite data

- ▶ Millimetric ground movement in height can be detected with the new Persistent Scatterer Interferometry (PSI) technique.
- ▶ Historical measurement time-series available.
- ▶ Large-area mapping with absolute spatial accuracy of circa 15m.
- ▶ Artificial reflectors to complement the distribution of naturally occurring measurement points, such as buildings and pipeline infrastructure.



Extract from St. Petersburg PSI result, showing individual measurement points with their computed average annual motion rate (in mm/yr). The points are colour coded according to the colour scale shown at the bottom right of the image. The example time-series chart shows the motion history of the indicated point.

## **Pipeline Route Planning**

The priority of certain areas for pipeline routing are classified using, for example, airborne and satellite imagery, as well as information on:



Extract of a gas pipeline network over Dorsten, Germany.

- ▶ Existing pipeline networks,
- ▶ Potential risk areas,
- ▶ Areas with legal restrictions, and
- ▶ Land cover, use and value.

## **Interested?**

Contact Michael Riedmann to find out how you can participate in the programme and assess the validity and utility of the services.

### **Email:**

[Michael.Riedmann@npagroup.com](mailto:Michael.Riedmann@npagroup.com)

